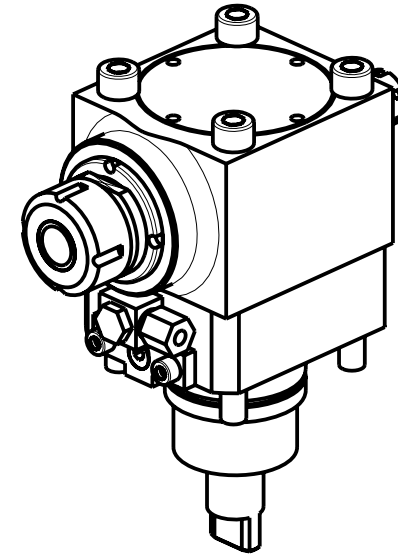
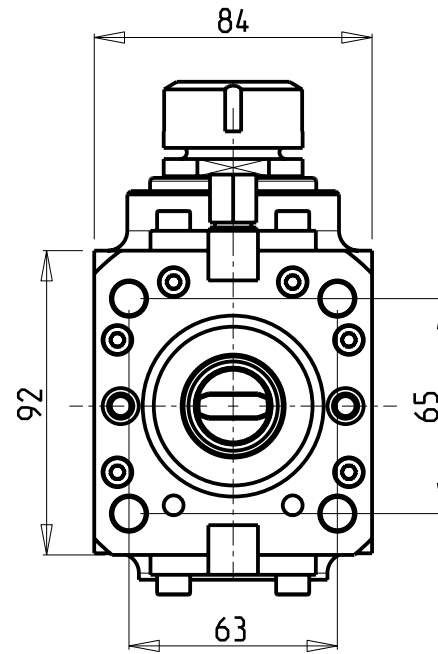
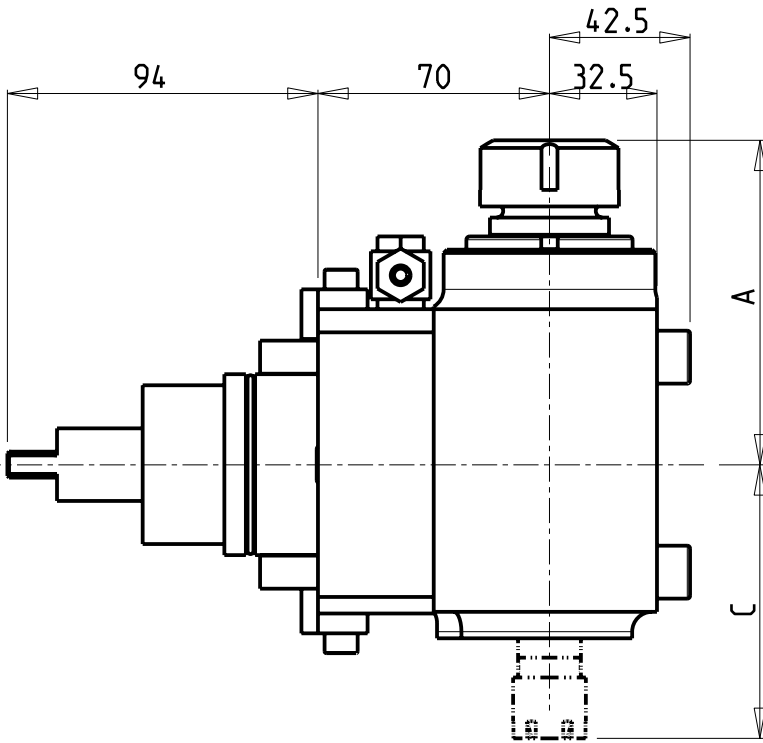


ATTENZIONE - ATTENTION - ACHTUNG

- Su macchine B545, B550, B565 non arriva in centro mandrino
- On machines B545, B550, B565 tool does not get to the centre of the spindle axis.
- Auf Maschinen B545, B550, B565 erreicht das Werkzeug nicht die Mitte der Werkzeug-Achse.



Cod. MT	Cod. BIGLIA	Mandrino Spindle Spindel	I	RPM	Reversibile lato mandrino/contromandrino Reversible sub/main spindle side Umkehrbare Spindel-seite/ Gegenspindel-seite	Lubrificazione int. Coolant through Innenkuehlung	Lubrificazione est. Ext. coolant Aussenkuehlung	A	B	C	CHIAVI INCLUSE Keys included Schlüssel einbegriffen	
0050825	T134-00027	ER25	1:2	8000	X		X	98.06	52.5	-	CHSTER25	CHUB36
0050625	-	ER25	1:2	8000	X	P=70bar		98.06	77.5	-	CHSTER25	CHUB36
0052516	-	ER25+ER16	1:2	8000	X		X	98.06	52.5	82.75	CHSTER25+CHMNER16	CHUB36

BIGLIA

MOD: B301/445/470/501(Y-S)/510/545/550/565/650/658/1200

MODULO MOTORIZ. ASSIALE MOLTIPLICATO I = 1:2

Geared-up axial driven tool I=1:2

Axial angetriebenes Werkzeug uebersetzt I=1:2

**M.T. srl**

Via dei Tamerici 1/3  
Tel. 0541/956034-957884  
Fax 0541/956341  
47842 S. GIOVANNI IN M. (RN)  
e-mail: mtma@mtmarchetti.com  
http://www.mtmarchetti.com

PRODUZIONE MODULI ROTANTI



PAGINA BGL200-1-10